



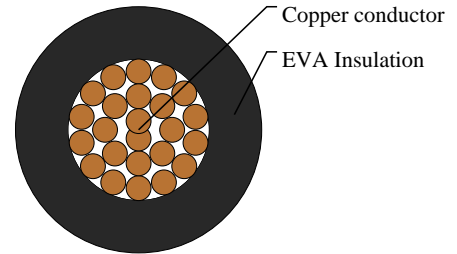
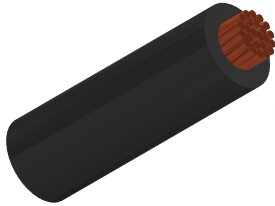
# Caledonian

Automotive Cables

www.caledonian-cables.com

marketing@caledonian-cables.com

## FL4G



## APPLICATIONS

This EVA insulated single-core cable is used for cable harnesses.

## STANDARDS

ISO 6722 Class D

## CABLE CONSTRUCTION

Conductor: Cu-ETP1 bare or tinned according to DIN EN13602

Insulation: Cross-linked ethylene/vinylacetate insulation(EVA)

## PHYSICAL AND THERMAL PROPERTIES

Operating temperature: -40°C to 140°C

## DIMENSION AND PARAMETERS

No. of Cores × Cross-sectional Area	No. and Dia. of Wires	Diameter of Conductor (max.)	Nominal Insulation Thickness	Approx. Overall Diameter	Approx. Weight	Max. Conductor Resistance at 20 °C
No. × mm <sup>2</sup>	no./mm	mm	mm	mm	kg/km	MΩ × km
1 × 0.75	24/0.21	1.30	0.48	2.5	11	25.4